



## About Us

Pharmadule was founded in Sweden in 1986. Since then, more than 80 projects have been delivered using Pharmadule's modular concept. Both multinationals and local companies have benefited from our delivery method. Since 2011 Pharmadule is part of Morimatsu Industry Group, Japan, an international manufacturer of core equipment, process skids, modules and other industrial systems to a wide variety of industries. Today the group employs more than 4000 people worldwide and we continues to excel in project delivery.

### Pharmadule Morimatsu AB

DanvikCenter 28  
131 30 Nacka, Sweden  
Tel: +46 (8) 587 42 000

### Pharmadule China

No. 29, Jinwen Road, Airport Industrial Park,  
Zhuqiao Town, Pudong, Shanghai  
201323 Shanghai, China  
Tel: +86 (21) 38112058

### Pharmadule Morimatsu Inc

101 Morgan Lane  
Plainsboro, NJ 08536, USA  
Tel: +1 (908) 722 6845

Email: [info@pharmadule.com](mailto:info@pharmadule.com)

### Morimatsu Italy

Centro Direzionale Milano Due,  
Palazzo Bernini, Via Fratelli Cervi  
20054 Segrate (MI), Italy  
Tel: +39 (0) 212 4120204

### We also have presence in

Singapore  
Dublin, Ireland  
Mumbai, India  
Leon, Mexico  
Yokohama, Japan



[www.pharmadule.com](http://www.pharmadule.com)



**pharmadule**  
A Morimatsu Group Company



# Pharmadule Indoor Modules

Rapid deployment of GMP facilities  
Flexible, agile, scalable – Your facility grows with your business



**Assembly Line Construction**  
Standardized, efficient and predictable fabrication for higher quality



**Sustainability Throughout**  
Optimized use of material, waste and energy through design and construction



**Prefabrication**  
90% off-site construction to minimize work on site and decreases risk



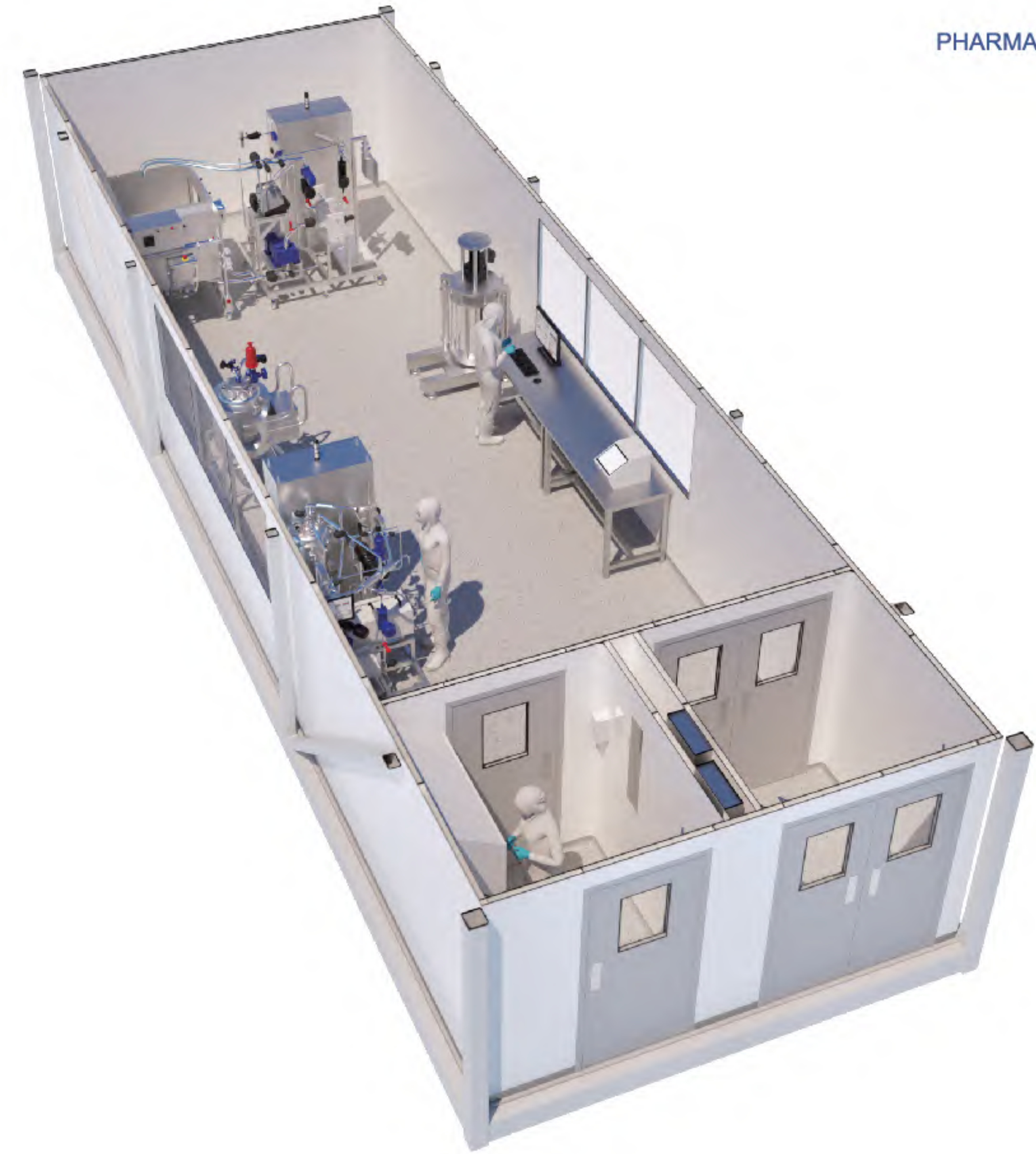
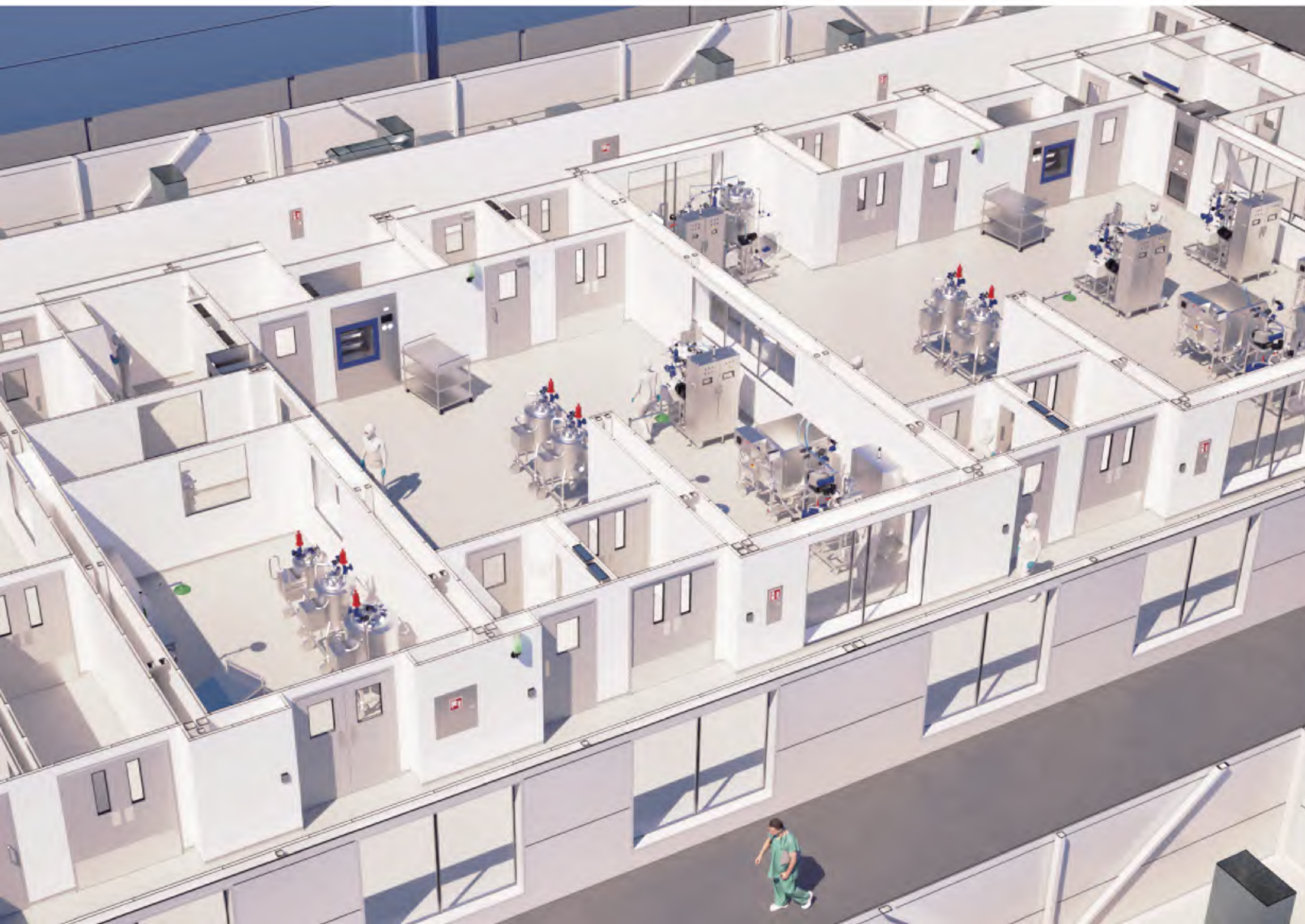
**Rapid Project Delivery**  
Quick construction and installation - minimum interruption of existing production and earlier return on investment



**Portable**  
Flexibility for future refurbishing or relocation



**Highly Customizable**  
Adaptable modular sizes, configurable to suit different layouts



**Materials & Quality**  
High quality, durable and easy to clean materials



**Compact Design**  
Optimized use of space with integrated structure and systems



**HVAC**  
Integrated energy efficient HVAC solution



**Cladding**  
Multiple cladding options available



**GMP Compliant**  
ISO classified cleanrooms



**Proprietary Connections**  
Seamless bridging between modules



## Design & Engineering

The Pharmadule way of designing facilities focuses on your business needs. Our indoor facilities are highly customizable and suitable for both large and small facilities. Modules can be added and standardized to allow for an expandable and scalable design.



## Fabrication

Fabrication of the modular building is performed in a controlled indoor environment in our state-of-the-art workshops. The fabrication follows rational and effective working procedures in an assembly line manner. Preparation of the final construction site can start in parallel, resulting in a compressed schedule – earlier return on investment.

Our experts are highly skilled engineers in the pharmaceutical field and have 35+ years of experience in fabrication of pharmaceutical plants across the globe.

## Site Assembly

The modules arrive safely to site and are assembled either directly on top of existing floor, recessed into the floor or on top of supports to create installation space below. The assembly inside an existing building is an ideal way to prevent delays due to environmental conditions.



## Appearance

Multiple cladding options can be used to suit your facility. Smooth durable and easy to clean materials are used for walls, ceilings and floors. Windows and vision panels are used to create an open and safe environment. Stainless steel is used for piping and equipment in cleanroom areas.

